

HAWAII COUNTY RESOURCE MAP

Referral System for Early Intervention and Community-based Supports for Children



A Project of the
Hawaii State Council on Developmental Disabilities
Children and Youth and Health Committee



Revised 2024

Resource Guide for Parents

- This guide is to help parents find services for their child. And provides information if you are concerned about your child's development or if your child was born with a developmental disability and you are looking for support services.
- The guide shows you the steps to receive services and what agencies are located near you that can help.
- If you are concerned about your child's development and would like to learn more about developmental screening or make a referral, please call our Early Intervention information and referral line at 808-594-0066 for Oahu or 1-800-235-5477 for Neighbor Islands.

What is Developmental Screening



- Provides a close look at how a child is developing, at certain ages, by using questionnaires or checklists that are validated and standardized.
- Asks simple questions about a child's development, including language, movement, thinking, behavior, and emotions, and may be completed by the parent/caregiver, health care provider, early childcare provider, or another trained provider.
- Completing developmental screens can help identify the child's strengths as well as if there are any concerns or areas where they may need some support or practice.
- The American Academy of Pediatrics recommends developmental screenings be completed, at a minimum, at every 9-, 18-, and 30-month well-child visit.
- Developmental screening tools are generally available for children from 1 month up to 5 years of age.
- Tracking development and identifying concerns early is important to help to make sure children get the services and supports they may need as soon as possible, to help them reach their best health and development.

Ages and Stages Questionnaires®

Ages and Stages Questionnaires® Third Edition (ASQ®-3) and Ages and Stages Questionnaires®: Social-Emotional, Second Edition (ASQ®:SE-2)

- The ASQ®-3 and ASQ®:SE-2 are examples of developmental and social-emotional screening tools that are commonly used.
- They are generally completed by the child's parent or caregiver (independently or with a provider).
- A questionnaire may be recommended to be completed every 2-, 4-, or 6-month period, depending on the child's age and if there are any concerns.
- Responses are “scored” and placed on a simple grid with 3 categories:
 - Not Near Cutoff = suggests there are no concerns in the area
 - Monitor Area = suggests there may be a risk for concern; child may need support/practice to develop skills in the area
 - Beyond Cutoff = suggests a concern and possible need for further evaluation.

The image shows a portion of the ASQ-3 48 Month Questionnaire form. It includes a header with the ASQ-3 logo and the text 'Ages & Stages Questionnaires®' and '48 Month Questionnaire'. Below the header, there is a section for 'Child's Information' with fields for Name, Date of Birth, Sex, and Race. There is also a section for 'Parent/Child Information' with fields for Name, Address, City, State, Zip, and Phone. The form is designed for parents to fill out and return to a provider.

The image shows the ASQ-3 Parent Guide, which is a green-bordered document. It contains the following sections:

- What is Screening and Why is it Important?**

From birth to age 5, a child's brain develops faster than at any other time in life. Screening is a quick check to make sure a child is developing on schedule. Screening results show a child's strengths and areas that may need support. There are simple, fun activities parents can do to support a child's development.
- What is ASQ-3?**

Ages & Stages Questionnaires®, 3rd Edition (ASQ®-3) is a parent-completed screening tool. ASQ-3 asks questions in 9 important areas of a child's development.

 - **Communication** asks about language—what a child understands and says.
 - **Gross motor** asks about the large muscles of a child's body, arms, and legs.
 - **Fine motor** asks about the small muscles of a child's hands and fingers.
 - **Problem solving** asks how a child thinks, solves problems, and plays with toys.
 - **Personal social** asks about self-help skills (feeding, dressing) and interactions with others.
- Important Points Before You Get Started**
 - ✓ Talk to your provider about materials you need to try ASQ-3 items.
 - ✓ Talk to your provider about any concerns or questions you have.
 - ✓ Make sure your child is rested and fed and ready to play!
 - ✓ Take a few days to finish ASQ-3. It's okay to practice!
 - ✓ Your child will be able to do some but not all of the items asked.
- How to Complete ASQ-3**
 - Observe or try each item, then mark a response:**
 - **YES**—Your child can do this skill.
 - **SOMETIMES**—Your child is learning this skill but is not quite there yet.
 - **NOT YES**—Your child is not able to do this skill yet.
 - You may skip items if:**
 - You don't have materials or don't understand the question.
 - The item is not okay with your family values or beliefs.
 - Complete the Overall Section:**
 - Questions are answered **YES** or **NO**.
 - Please share any concerns or worries you may have about your child.

Developmental Screening Providers

There are different resources that can provide developmental screening and support, such as:

Doctors and other health care providers – doctors, nurses, and other health care providers typically monitor children’s development at every well-child visit and do developmental screening as part of well-child visits at 9-, 18-, and 30-months.

Preschools and other early learning programs – preschools and early learning providers may do developmental screenings at certain times (check with the provider). Examples of preschools and early learning programs that may do developmental screening include:

- Early Head Start and Head Start Programs
- Family Child Interaction Learning (FCIL) Programs
- Public Prekindergarten Programs
- Accredited preschools and childcare centers/programs

****Not all preschools and childcare centers/programs are accredited. Accredited means the school or program has voluntarily met a certain level of standards and quality in addition to minimum licensing standards.*

****State Programs – certain programs funded by or available through State agencies, may provide developmental screening and support, at no cost to families.*

Developmental Screening Providers Cont.

State Agencies that can provide developmental screening:

- Department of Health, Children with Special Health Needs Branch, Hi'ilei Developmental Screening Program
- Department of Health, Maternal and Child Health Branch, Your 'Ohana Program (home visiting services)
- Department of Health, Public Health Nursing Branch
- Department of Human Services, Child Welfare Services, Voluntary Case Management (VCM) Family Strengthening Services (FSS)

Non-profit and other organizations and providers – organizations and providers in the community may offer different services and supports for children and families, such as developmental screening.



Early Intervention and Referral Resources

There are different resources that can assist with or provide early intervention services and/or treatment.

- **Doctors and other health care providers** – primary health care providers generally work with families and their health/medical insurance plan, if a child needs specialized medical treatment or care (for example, from a neurologist, orthopedist, speech-language pathologist, physical, occupational or behavioral therapist, etc.).
- **Department of Human Services, Med-Quest Division, Early and Periodic Screening, Diagnostic and Treatment (EPSDT) benefit** – provides preventative and comprehensive health services for Medicaid-eligible (Quest Integration) infants, youth, and individuals up to the age of 21.
- **Medical Home** – is an *approach* to providing comprehensive primary care that facilitates partnerships between patients, clinicians, medical staff, and families, and includes specialty care, educational services, family support, and more. Some primary health care providers utilize this approach in their practice.
- **Department of Health, Early Intervention Section (EIS)** – provides information to support the development of infant and toddlers from birth to 3 years of age; and services for eligible infants and toddlers with special needs (and their families), at no cost to families.
- **Department of Education, Special Education** – provides specifically designed instruction, related services, and other supplementary aids, for children aged 3 through 21 years, who are eligible, at no cost to families.
- **Non-profit and other organizations and providers** – various organizations and providers in the community may offer certain services for children and families (e.g., behavior therapy). Cost and payment for services will vary depending on the organization/provider, the service, and the child and family's situation.

What Type of Service Provider Do I Need?

State Programs – certain programs funded by or available through State agencies, may provide developmental screening and support, at no cost to families.

If your child is born with a disability (blind, deaf, down syndrome, fetal alcohol spectrum disorder etc...). There are specific programs that can assist your child starting at birth:

- Department of Health-Children With Special Health Needs Program (birth-age 20)
- Early Intervention Program run by:
 - Easterseals (birth – age 3)
 - Family Support Hawaii (birth-age 3)
 - Department of Education Early Learning (age 3-5)

If you are not sure if your child has a disability. But you are concerned about their behavior or development. There are several programs you can contact to have screening completed. They include:

- Department of Health- Public Health Nurse
- Your child's pediatrician
- Local community programs that provide developmental and behavioral screening such as:
 - Hiilei
 - Child and Family Services –Family Support Services
 - Child and Family Services- Early Head Start and Head Start Programs
 - Department of Human Services, Child Welfare Services, Voluntary Case Management (VCM) Family Strengthening Services (FSS)
 - Department of Health, Maternal and Child Health Branch, Your 'Ohana Program (home visiting services)

How Services Work

Identification & Referral

Step 1: Identification of Need

- **Source:** Pediatricians, parents, caregivers, or teachers identify a developmental concern.

Step 2: Referral

- **Action:** Contact the Early Intervention Section (EIS) of the Hawaii Department of Health or a local Child and Family Service (CFS) office.

Eligibility Determination

Step 3: Initial Contact

- **Action:** EIS or CFS reaches out to the family to discuss concerns and provide information.

Step 4: Eligibility Screening

- **Action:** Conduct a screening to determine if the child is potentially eligible for services. This may include developmental questionnaires and observations.

Evaluation & Assessment

Step 5: Comprehensive Evaluation

- **Action:** Schedule and conduct a thorough evaluation, including developmental assessments, family interviews, and other necessary tests.

Step 6: Eligibility Determination

- **Action:** Based on the evaluation results, determine if the child meets the criteria for early intervention services.

Individualized Family Service Plan (IFSP)

Step 7: Develop IFSP

- **Action:** Collaborate with the family to create an Individualized Family Service Plan (IFSP) that outlines specific goals, services, and supports for the child.

Step 8: IFSP Meeting

- **Action:** Review and finalize the IFSP with input from the family, service providers, and relevant professionals.

Service Provision

Step 9: Implement Services

- **Action:** Begin providing the agreed-upon services and supports as outlined in the IFSP.

Step 10: Service Coordination

- **Action:** A service coordinator is assigned to help manage and coordinate the delivery of services.

Monitoring & Review

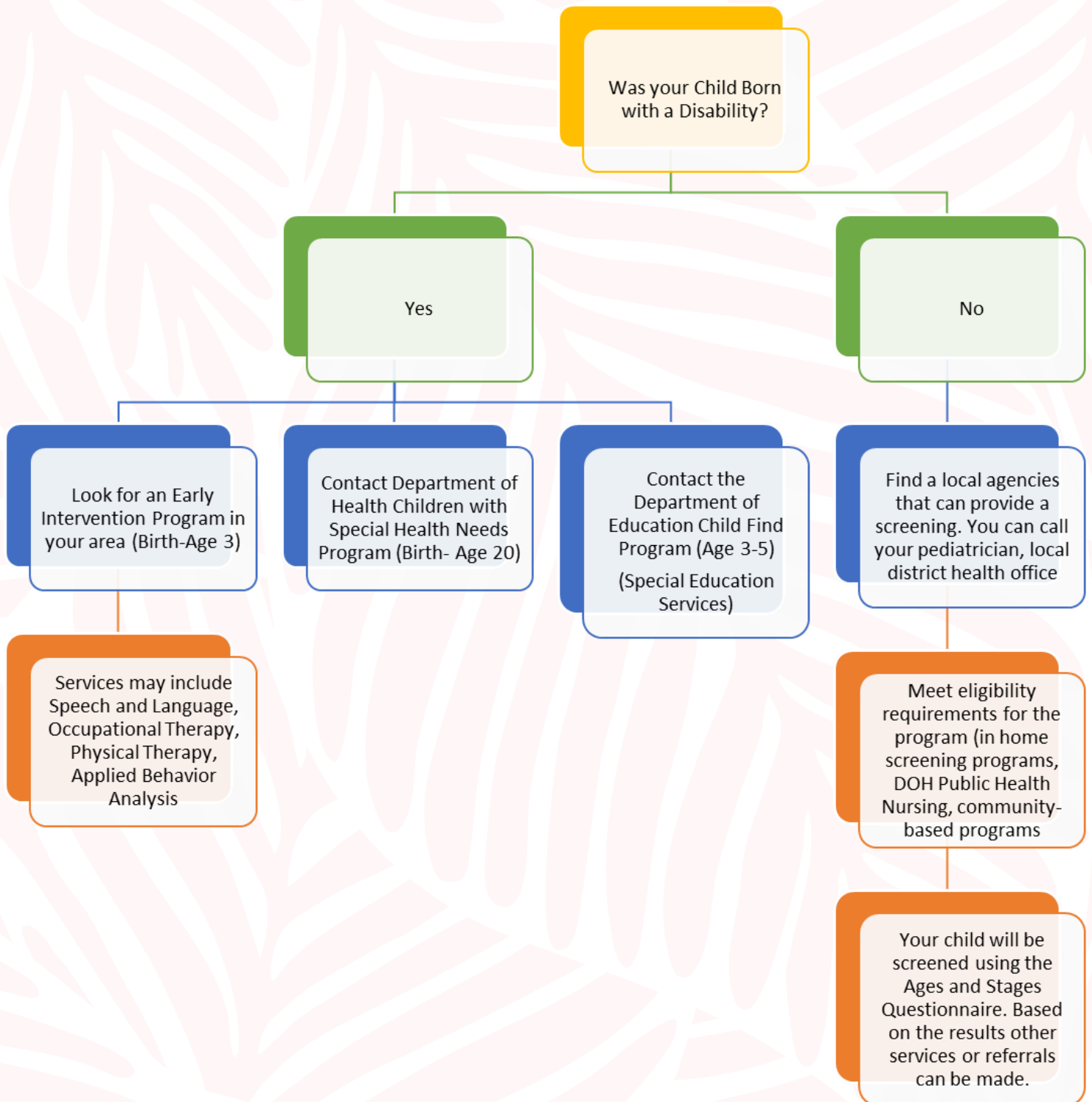
Step 11: Ongoing Monitoring

- **Action:** Regularly monitor the child's progress and the effectiveness of the services.

Step 12: IFSP Review

- **Action:** Review and update the IFSP periodically (usually every 6 months) to reflect the child's progress and any changes in needs.

How it Works



What Happens if Concerns are Identified

The developmental screening provider should talk with the child's family about the screening results and discuss possible next steps, what the process might look like, and how the child and family may be supported. Example next step options may include:

- The developmental screening provider may share ideas for activities the family could do with the child to help them learn and develop skills in a particular area(s); and they may suggest continuing to monitor the child's development with more frequent developmental screenings, if available.
- The developmental screening provider may share referral options for the child to get a ***developmental evaluation***. A developmental evaluation is usually done by a trained specialist, provides a more in-depth look at the child's development, and can help determine if the child may need early intervention services and/or any special treatments.

Any concerns about a child's development should always be discussed with the child's health care provider.



ASQ Monitoring vs. Referral

Monitoring (Grey Area)

The program will discuss the areas that are a concern. They may recommend additional services or therapies, to target specific areas. Those might include speech and language pathology, occupational therapy and or physical therapy

The program may give you a list of activities you can do with your child.

The program will want to monitor your child's development and re-screen again in 1-3 months depending on your child's age.

Child's score shows areas of concern

Beyond Cutoff/Referral- (Black Area)

The program will discuss the options for your child. It may include speech and language therapy, occupational therapy or physical therapy.

They may refer your child to an early intervention program that can provide more support.

They may recommend your child sees a specialist for additional developmental evaluation.



Agencies in your Area

Was your child born with a disability?

If yes, here are some agencies in your area that can provide services and support.

If your child was not born with a disability but you have a concern, please go to the next page for a list of agencies that can do a screening assessments.

Early Intervention Service Providers

Children with Special Health Needs Program

Hilo

75 Aupuni Street #201, Hilo, HI
96720

Ph: 808-974-4288

Kona

79-1015 Haukapila Street,
Kealahou, HI 96750

Ph: 808-322-4882

Department of Health Early Intervention Section

Ph: 1-800-235-5477

Kona/Kau Child Development Program Family Support Services of West Hawaii

Ph: 808 -334 - 4114

Hilo Easterseals

Ph: 808 -961 - 3081

North Hawaii Child Development Program Family Support Services of West Hawaii

Ph: 808 - 885 - 0086 ext. 13

Community Agencies that can provide Screenings

**PACT Early Childhood Education
—Hawaii**
27 Waiuanuenue Ave, Hilo, HI 96720
Ph 961-0570

Hawaii Behavioral Health
69 Railroad Ave., Ste. A3, Hilo, HI
96720
Ph 935-7949

**Family Support Services of West
Hawaii**

Healthy Start (infant and child
parenting)
Ph 808-326-7778

Early Head Start (infant parenting)
Ph 808-334-4134 (Kona)
Ph 808-885-0086 x21 (Waimea)

Hiilei Hawaii
Hilopa'a Family to Family Health
Information Center:
Hilo: 808-974-4288
Kona: 808-322-4882

Public Health Nursing
Hilo: 808-974-6025
Kona: 808-322-1500

Keiki O Ka Aina (infant and child
parenting)
75-127 Lunapule Road, Suite 15A
Kailua-Kona, Hawaii 96740
Ph: 808- 843-2502

**Child and Family Services: Head
Start and Healthy Family Home
Visiting**

West Hawaii
81-6587 Mamalahoa Hwy. Bldg. C
Kealahou, HI 96750
Ph 808-323-2664

East Hawaii
1045A Kilauea Avenue Hilo, HI
96720
Ph 808-935-2188

**Leadership in Disabilities &
Achievement of Hawaii
School Readiness Project** (age 2
to 5 years)
245 N Kukui Street Suite 205,
Honolulu HI 96817
Ph 808-696-5361



Screening Providers Cont.

Tutu and Me Programs Birth to Age 5

HONOKA'A COMPLEX GYM

45-541 Akia Street, Honoka'a, HI
96727
Mondays & Wednesdays
(808) 885-1200

'IMIOLA CONGREGATIONAL CHURCH

65-1084 Māmalahoa Highway,
Waimea, HI 96743
Tuesdays & Thursdays
(808) 885-1200

KEA'AU ARMORY

16-512 Volcano Rd. Keeau, HI
96749
Mondays & Wednesdays
(808) 934-7476

WILLIAM BILLY KENOI PĀHOA DISTRICT PARK

15-2710 Kauhale Road, Pāhoa, HI
96778
Tuesdays & Thursdays
(808) 934-7476

PANAEWA GYM

100 Ohuohu Street, Hilo, HI 96720
Mondays & Wednesdays
(808) 934-7476

ST. PAUL'S CATHOLIC CHURCH PAVILION

79-7234 St. Paul's Road, Honalo, HI
96740
Mondays & Wednesdays
(808) 327-9327

WAINAKU GYM

30 Aikane Lp. Hilo, HI 96720
Tuesdays & Thursdays
(808) 934-7476

WEST HAWAI'I COMMUNITY HEALTH CENTER

74-5214 Keanalehua Dr. Kailua
Kona, HI 96740
Tuesdays & Thursdays
(808) 327-9327

Hawaii Department of Education

Early Learning

(ages 3-5)

‘Honoka‘a Elementary

45-534 Pakalana St, Honokaa, HI
96727
Ph (808) 775-8820

Ho‘okena Elementary

45-534 Pakalana St, Honokaa, HI
96727
Ph (808) 775-8820

Ka‘u High & Pāhala Elementary

96-3150 Pikake St, Pahala, HI
96777
Ph (808) 313-4100

Kea‘au Elementary

16-680 Keaau-Pahoa Rd, Keaau, HI
96749
Ph (808) 982-4210

Keonepoko Elementary

15-890 Kahakai Blvd, Pāhoa, HI
96778
Ph (808) 965-2131

Kohala Elementary

54-3611 Akoni Pule Hwy, Kapaau,
HI 96755
Ph (808) 889-7117

Konawaena Elementary

81-901 Onouli Rd, Kealakekua, HI
96750
Ph (808) 323-4555

Mountain View Elementary

18-1235 Volcano Rd, Mountain
View, HI 96771
Ph (808) 968-2300

Na‘alehu Elementary

95-5545 Mamalahoa Hwy, Naalehu,
HI 96772
Ph (808) 939-2413

Pāhoa Elementary

15-3030 Pahoa Village Rd, Pāhoa,
HI 96778
Ph (808) 965-2141

Kamaaina Kids — Hilo

Ages 6 weeks -5 years

Chiefess Kapiolani Elementary School

966 Kilauea Ave,
Hilo, HI 96720

Ernest Bowen de Silva Elementary School

278 Ainako Ave,
Hilo, HI 96720

Connections PCS

174 Kamehameha Ave,
Hilo, HI 96720

Keaukaha Elementary School

240 Desha Ave,
Hilo, HI 96720

Ka Umeke Kaeo PCS

222 Desha Ave,
Hilo, HI 96720

Waiakeawaena Elementary School

2420 Kilauea Ave,
Hilo, HI 96720

Waiakea Elementary School

180 West Puainako, Hilo, HI 96720

Hilo Union Elementary School

506 Waianuenue Ave,
Hilo, HI 96720

Haaheo Elementary School

121 Haaheo Rd,
Hilo, HI 96720

Kaumana Elementary School

1710 Kaumana Dr,
Hilo, HI 96720

Kamehameha Schools - Hawaii Campus

16-714 Volcano Rd,
Keaau, HI 96749

Keonepoko Elementary School

15-890 Kahakai Blvd,
Pahoa, HI 96778

Volcano School of Arts and Sciences PCS

99-128 Old Volcano Rd,
Volcano, HI 96785

Kalaniana'ole Elementary School

27-330 Mamalahoa Hwy,
Papaikou, HI 96781

Laupahoehoe Community PCS

35-2065 Old Mamalahoa Hwy,
Waimea, HI 96743

Kamaaina Kids — Kona

Ages 6 weeks -5 years

Kealakehe Elementary School
74-5118 Kealaka'a St,
Kailua-Kona, HI 96740

Kahakai Elementary School
76-147 Royal Poinciana Drive,
Kailua-Kona, HI 96740

Kahakai Elementary School
76-147 Royal Poinciana Drive,
Kailua-Kona, HI 96740

Holualoa Elementary School
76-5957 Mamalahoa Hwy,
Holualoa, HI 96725

Waikoloa Elementary School
68-1730 Ho'oko St,
Waikoloa, HI 96738

Konawaena Elementary School
81-901 Onouli Rd,
Kealahou, HI 96750

Hookena Elementary School
86-4355 Mamalahoa Hwy,
Captain Cook, HI 96704

Honaunau Elementary School
83-5360 Mamalahoa Hwy,
Captain Cook, HI 96704



Early Childhood Education Programs

Early Childhood Education programs are created to promote healthy growth and development for children ages 2.5-5. Some programs are community based and require parent participation such as Tutu and Me. While others are paid preschool or daycare program.

All can provide socialization and supports to children and families.

For a list of preschool programs in your area and to find out about subsidy programs you can contact PATCH Hawaii.

<https://www.patchhawaii.org/>

26 Waianuenue Avenue,
Hilo, Hawaii 96720

Phone (808) 961-3169

Email sdelimasuganuma@patch-hi.org

75-5995 Kuakini Hwy. Suite 521
Kailua-Kona, Hawaii 96740.

Phone (808) 322-3500

Email rhall@patch-hi.org



Infant Mental Health

Infant mental health is about how babies feel, show their feelings, and make connections with their parents or caregivers. It also includes how they explore the world around them. During the first few years of life, a baby's brain is growing quickly, and what happens around them can have a big impact. A loving and safe environment helps babies grow up healthy and happy.

If you are concerned about your infant/toddler's mental health please contact.

Association for Infant Mental Health in Hawai'i
<https://aimhhi.org/>

Applied Behavior Analysis Programs (ABA Programs)

*The Hawaii State Council on Developmental Disabilities does not endorse any of the listed ABA providers. Please note ABA providers change frequently, and this may not be a full list of agencies available. *

ABC Group Hawaii

Ph: 808-277-7736

Email: info@abcgrouphawaii.com

Aloha ABA

<https://www.aloha-aba.com/>

Autism Behavior Services

Phone- 1 (855) 581-0100

Email:

info@autismbehaviorservices.com

Big Island Behavioral Health- Bayada

1221 Kilauea Ave, Suite 60,

Hilo, HI, 96720

Ph: 808-969-9622

Hawaii Behavioral Health

69 Railroad Ave., Ste. A3,

Hilo, HI 96720

Ph: 935-7949

Malhuia ABA LLC

Ph: 8086644401

Email:

kokanodalere@maluhiaaba.com

Positive Behavior Supports (PBS)

500 Ala Moana Blvd, Ste 7400

Honolulu, HI 96813

<https://www.teampbs.com/>

Sharky Hearts Behavior Support Services

Ph: 808-746-1779

Email:

paige.stegeman@sharkyhearts.com

Step Ahead ABA

Ph: 808-824-4607

Email: info@stepaheadaba.com

